

November 2023



BADLANDS RESOURCES

INVESTOR PRESENTATION

**Experienced Explorers in Emerging High-Grade
Gold District-Black Hills, South Dakota**

BLDS: TSX.V | badlandsresources.com

Forward Looking Statements

This presentation contains certain statements that may be deemed “forward-looking statements”. All statements, other than statements of historical fact, that address events or developments that Badlands Resources Inc. (“Badlands Resources”) expect to occur, are forward-looking statements.

Forward-looking statements are statements that are not historical facts and are generally, but not always identified by the words “expects”, “plans”, “anticipates”, “believes”, “intends”, “estimates”, “projects”, “potential” and similar expressions, or that events or conditions “will”, “would”, “may”, “could” or “should” occur.

Although Badlands Resources believe the expectations expressed in such forward-looking statements are based on reasonable assumptions, such statements are not guarantees of future performance and actual results may differ materially from those in the forward-looking statements. Factors that could cause the actual results to differ materially from those in forward-looking statements include market prices, exploration and production successes or failures, continued availability of capital and financing, inability to obtain required shareholder or regulatory approvals, and general economic market or business conditions.

Forward-looking statements are based on the beliefs, estimates and opinions of Badlands Resources management on the date the statements are made.

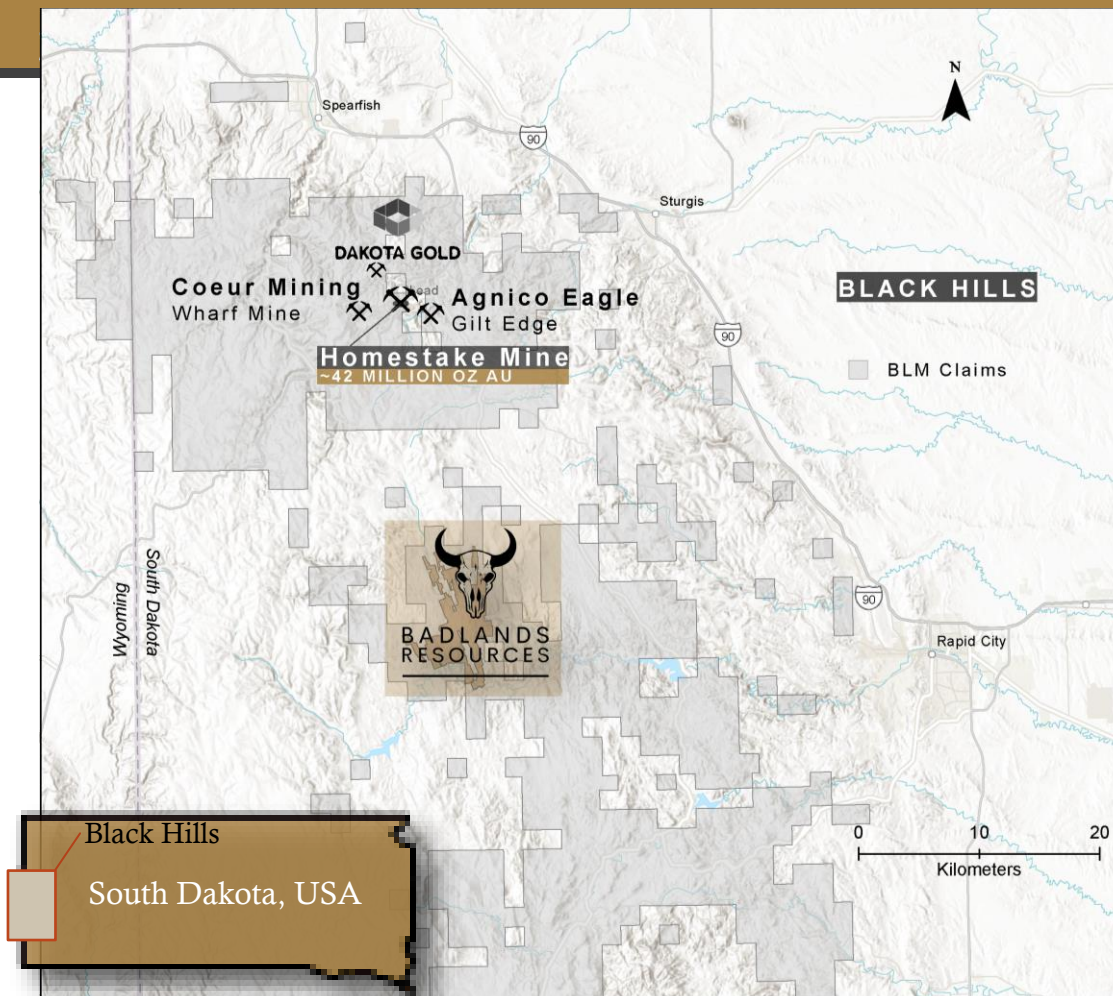
Carl Ginn, P.Geo., has approved the information contained in this presentation. Mr. Ginn is a Qualified Person pursuant to National Instrument 43-101.



Bella Project Highlights

Black Hills, South Dakota

- **The Richest Banded Iron Formation (BIF) Hosted Gold Belt**
 - Homestake Mine hosted ~42M oz Au
 - Coeur Mining currently mining multi-million oz deposit in the Homestake District
- **Badlands 'Bella Project' is located 20km from Homestake Mine**
 - Identical ages in gold mineralization and structural controls
 - Similar geological model ie plunging folds
 - Potential for large "Ovoid" bodies
- **3160 Ha** consisting of 9 patented lode claims
 - Multiple historic mines on the property including Cochrane, Standby, Lookout, King of West and Yellowbird Mines
- **2022 - 23 Field Program**
 - High-grade gold grab samples up to 138g/t Au
 - **Over 600 grab samples taken in 2023 with assays pending**



Badlands
Resources Inc.

BLDS: TSX.V | badlandsresources.com

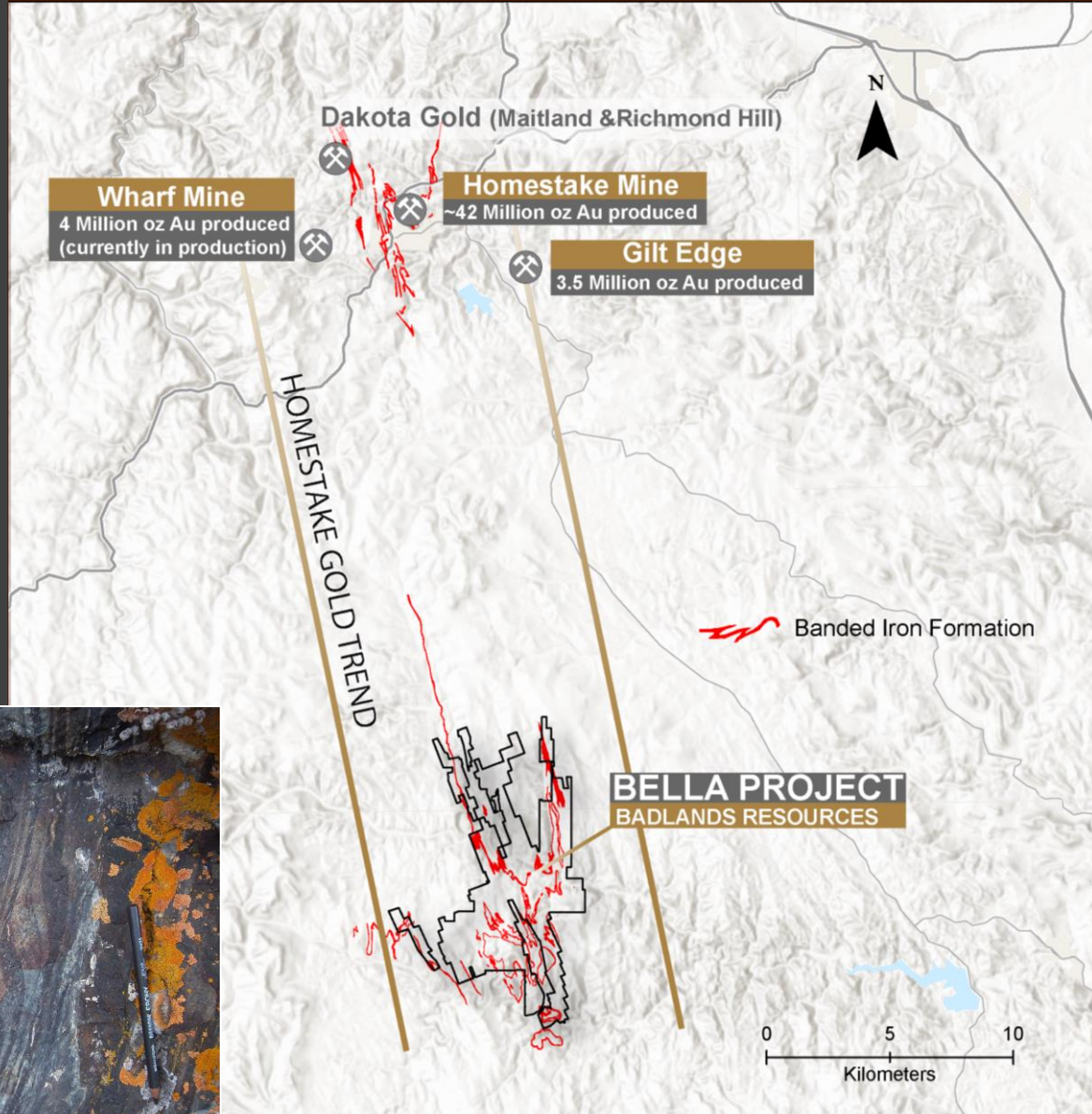
Homestake Gold Trend

Bella Project only 20km away from Homestake Mine BIF

The Rochford district contains historic gold mines that targeted Proterozoic and Archean gold mineralization associated with iron formations and shear zones similar to the deposits at the former Homestake gold mine in the northern Black Hills. The host rocks consist of metamorphosed greywacke, iron formation, quartz mica schists, basalt and gabbro.

Homestake and Rochford districts host similar gold mineralization in the banded iron formation (BIF)

Little to no exploration between Homestake and Bella, partly due to shallow sediment cover



Folded BIF at Bella Project

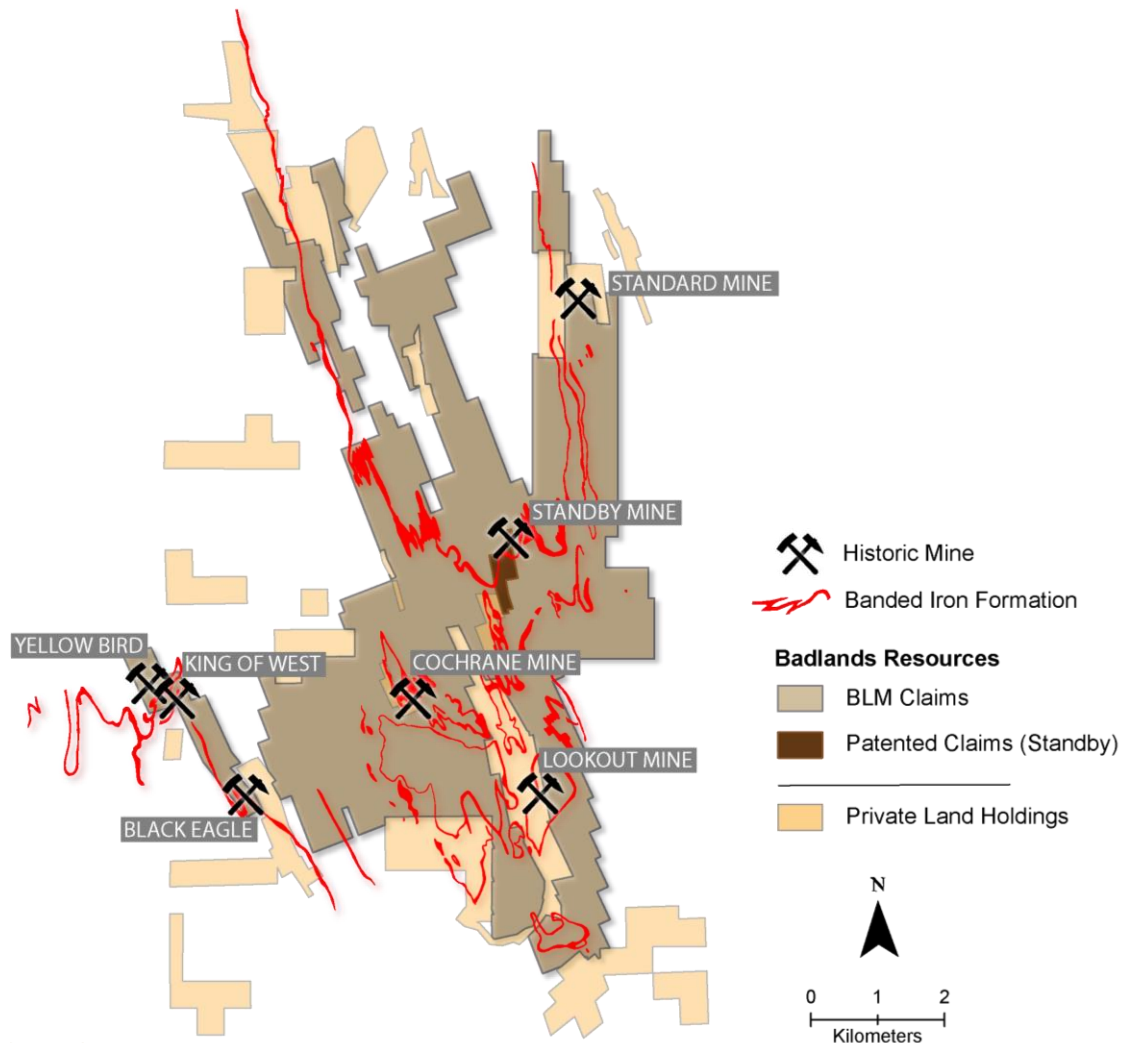


Badlands Resources Inc.

BLDS: TSX.V | badlandsresources.com

Rochford District Claims

3160Ha in the Black Hills



- Majority of the historic drilling was completed on the Standby patent accounting for 16,360m (45 holes).
- Underexplored near surface targets over remainder of property
- Minimal ground work and mapping in the last 10 years with only 30 samples taken in 2022.
- Geophysics completed in 2017 and processed by Condor
- Structural model completed by SRK in 2021



Badlands
Resources Inc.

FIELD PROGRAM 2023

Over 600 surface samples taken on the Bella Project in 2023 (assays pending)

90% of exposed BIF wasn't covered by sampling prior to 2023

King of West & Yellow Bird Prospect

2022 High-Grade Grab Samples
22MV04- 138 g/t Au
22MV13- 131 g/t Au
22MV07- 111.5 g/t Au
22MV14- 83.6 g/t Au
22MV02- 71.7 g/t Au

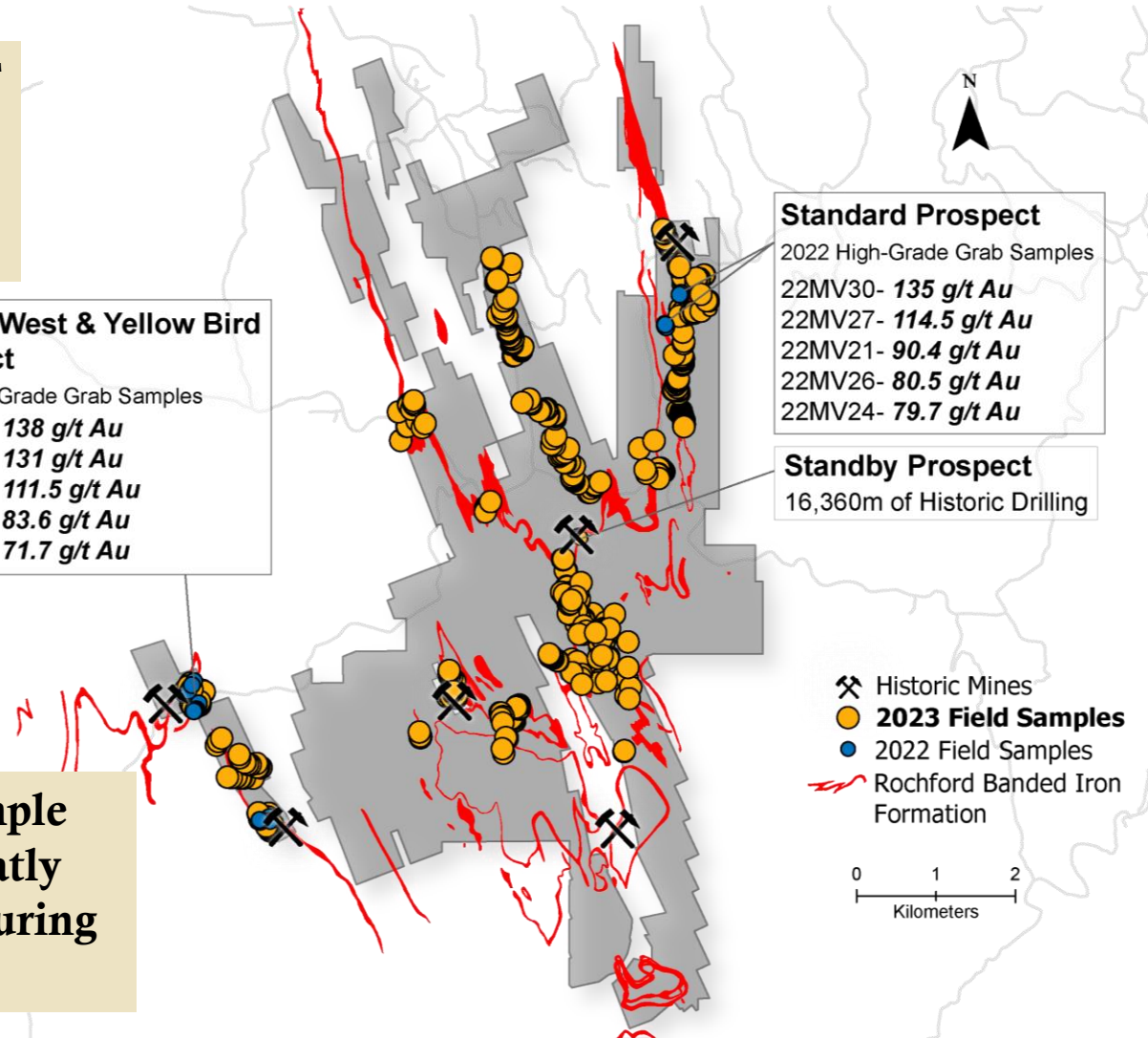
Standard Prospect

2022 High-Grade Grab Samples
22MV30- 135 g/t Au
22MV27- 114.5 g/t Au
22MV21- 90.4 g/t Au
22MV26- 80.5 g/t Au
22MV24- 79.7 g/t Au

Standby Prospect

16,360m of Historic Drilling

Surface sample density greatly increased during 2023



Field Program 2023

Bella Project, South Dakota

Folds in Poverty Gulch Slate



Folded Rochford Iron Formation



Folded BIF

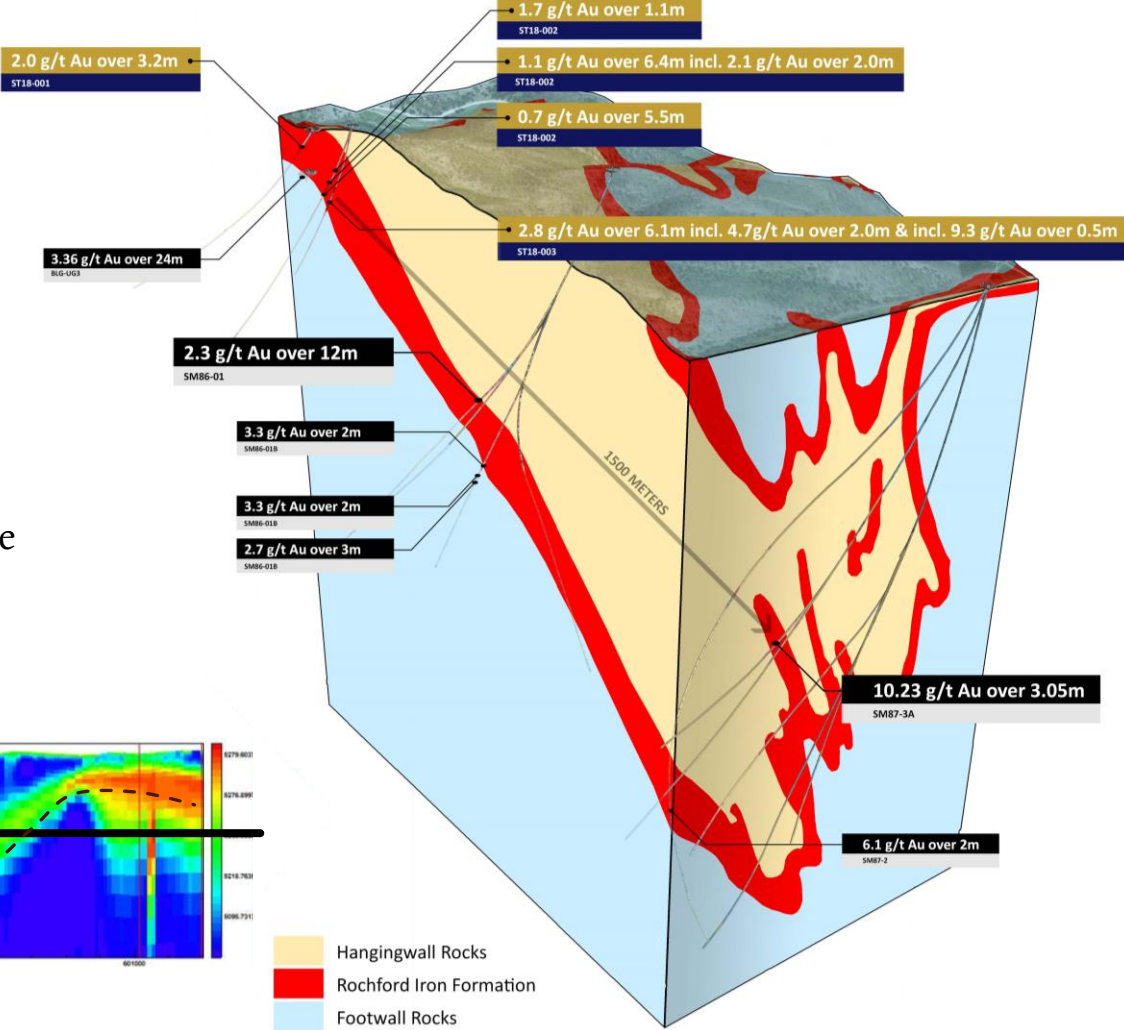
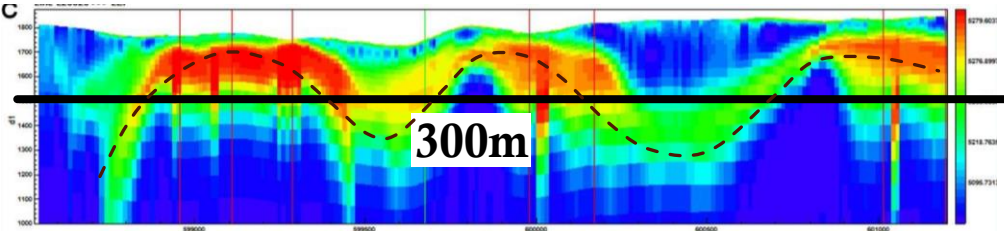


Pyritic Nahant Schist



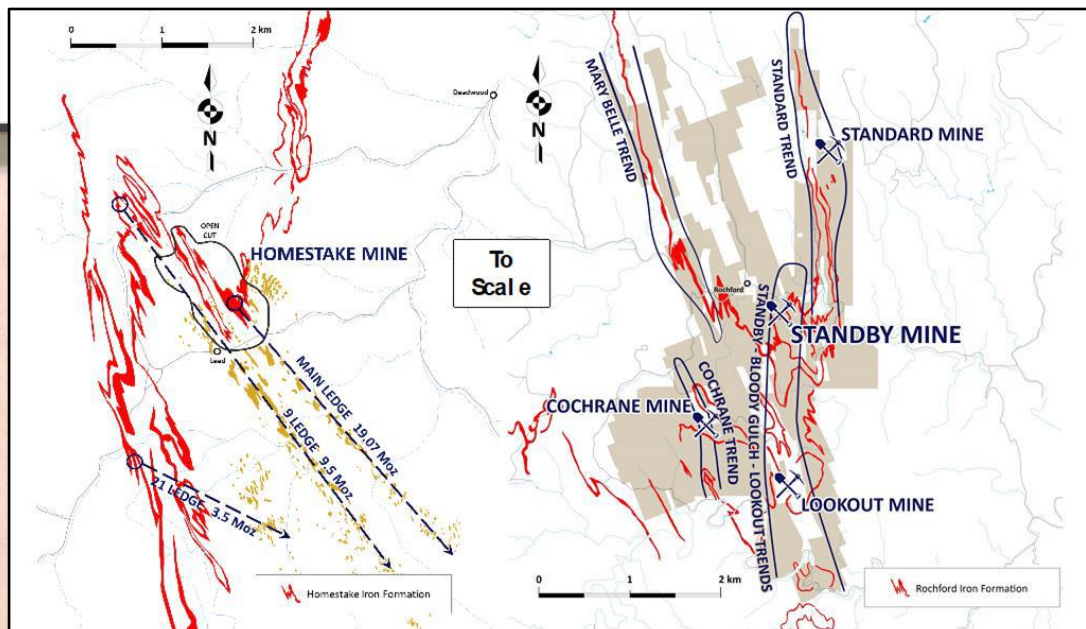
Standby Mine Target

- Previous drilling at Standby confirms gold mineralization to a vertical depth of **1000m**
 - Focus was on deep plunge extensions from historic Standby Mine. Following Homestake style ledge model that produced ~42M oz Au.
- Numerous similar plunging folds on the Bella property yet to be tested
- Magnetic response at Standby Mine can be identified in multiple depth slices.
 - Overlapping EM resistivity and Mag susceptibility anomalies extend to deep depth slice



Bella Project Mineralization

Standby drill core confirms Homestake style mineralization on property



Standby DDH ST18-006 Core Sample (below) compared to Homestake 9 Ledge sample (above). Similar mineralization & alteration observed.

Homestake and Rochford Districts hosts similar structural controls and geology



Exploration Plan & Upcoming Catalysts



2024

Q1

EVALUATE 600+
SAMPLES FROM 2023
FIELD PROGRAM

ASSESS PRIVATE CLAIM
ACQUISITION FOR
RAPID DRILL ACCESS

Q2

2024 FIELD PROGRAM &
DRILL TRAGETING
WILL FOCUS ON NEAR
SURFACE TARGETS

DRILL PERMITTING

ADDITIONAL SURFACE
SAMPLING ALONG
~50KM OF BIF

Q3

DRILL PROGRAM AT
BELLA PROJECT

Q4



Badlands
Resources Inc.

BLDS: TSX.V | badlandsresources.com

Dale Ginn

President & CEO, Director

Mr. Ginn is an experienced mining executive and geologist with over 30 years of experience. He is the founder of over ten exploration and mining companies and has led and participated in a variety of gold and base metal discoveries, many of which have entered production. Mr. Ginn has led or was part of the discovery teams for the Gladiator, Hinge, 007,777, Trout Lake, Photo, Edleston, and Tartan Lake deposits. His Contributions have led to approximately 10 million ounces in resource generation as well as over C\$500 million in capital raised for exploration and development projects. His experience includes both senior and junior companies such as Goldcorp, Harmony Gold, Hudbay, Westmin, San Gold, Bonterra, Gatling Exploration and others. Most recently, Mr. Ginn led the discovery of the Bardwell/Boomerang Nickel deposit near Timmins, Ontario for Aston Minerals.

Nav Dhaliwal

Executive Chair and Director

Mr. Dhaliwal is an experienced mining executive, financier, and capital markets expert with a strong record of value creation. He was the founding CEO of Bonterra Resources Inc., which made the award-winning Gladiator discovery in Quebec. Mr Dhaliwal raised over \$140M for Bonterra and played a key role in the company's market cap growth from \$10M to over \$200M during the base of the gold market cycle. He has founded several other successful companies in the resource sector, including Gatling Exploration Inc. and Pacton Gold Inc. Mr Dhaliwal is also the founder of the highly successful RSD Capital which invests in, and provides management and technical expertise to public and pre-IPO companies. Mr. Dhaliwal has a large, international network of financial connections and has raised over \$400M for companies since 2010.



**Badlands
Resources Inc.**

NESLON W. BAKER

DIRECTOR

Mr. Baker has been active in the mineral exploration industry for over 50 years. He received his Mining Technology Diploma (1964) at the Haileybury School of Mines, in Ontario followed by a B.Sc. degree in Geological Engineering in 1968 from the South Dakota School of Mines. Mr. Baker is the founder and has been the President and CEO of Mineral Mountain Resources Ltd. since July 2010. Mr. Baker has served on several boards in the junior resource sector and was a founder of Rainy River Resources Ltd. (TSXV: RR) serving as a Director, President and CEO from March 2005 to June 2009. During this period the RR share price increased from the ~\$0.25 to a high of over \$13 per share. His Rainy River team raised \$35M and expanded the deposit from .45mm ounces Au to 4.6mm gold & 11.4mm silver ounces. RR was sold for \$343m to New Gold in 2013 (on production 2017). Mr. Baker is lifetime member of the PDAC and has served as a director of PDAC.

TREVOR THOMAS LL.B

DIRECTOR

Mr. Thomas has practiced in the areas of corporate commercial, corporate finance, securities, and mining law since 1995, both in the private practice environment as well as in-house positions and is currently general counsel for Hunter Dickinson Inc. Prior to joining Hunter Dickinson Inc. he served as in-house legal counsel with Placer Dome Inc. In addition he is a Director of Quadro Resources Ltd.

TERRENCE A. LYONS

DIRECTOR

Terry Lyons currently serves as Lead Director and Chair of the Audit Committee of Canaccord Genuity Group Inc., Director, and Chair of the Audit Committee of Martinrea International Inc. and a Director of Badlands Resources Inc. and private company Waterrot Technologies Inc. (Chairman). Mr. Lyons is a retired Managing Partner of Brookfield Asset Management, past Chairman of Polaris Materials Corp. recently acquired by Vulcan Materials, Northgate Minerals Corp. (now Alamos Gold), Eacom Timber Corp. (acquired by Interfor), Three Valley Copper Corp., Westmin Mining and Vice-Chairman of Battle Mountain Gold (acquired by Newmont Gold). He is a member of the Institute of Corporate Directors.

Terry is a Civil Engineer (UBC) with an MBA from Western University. He is a Member Emeritus of the Advisory Board of the Richard Ivey School of Business and is active in sports and charitable activities, is a past Governor of the Olympic Foundation of Canada, past Chairman of The Mining Association of B.C., past Governor and member of the Executive Committee of the B.C. Business Council, past Co-Chair of the B.C. Business Hall of Fame, past Director of the Institute of Corporate Directors (BC) and a former director of the BC Pavilion Corp. (Pavco), In 2007 he was awarded the INCO Medal by the Canadian Institute of Mining and Metallurgy for distinguished service to the mining industry.

Share Capital

BLDS:TSX.V

Share Price	C\$0.5
Shares Outstanding	11.3 M
Options	0.7 M
Warrants	0.4 M
Fully Diluted	12.4 M
Mkt Cap. (Basic)	5.7 M



Adit on the Bella Project



Badlands
Resources Inc.

BLDS: TSX.V | badlandsresources.com



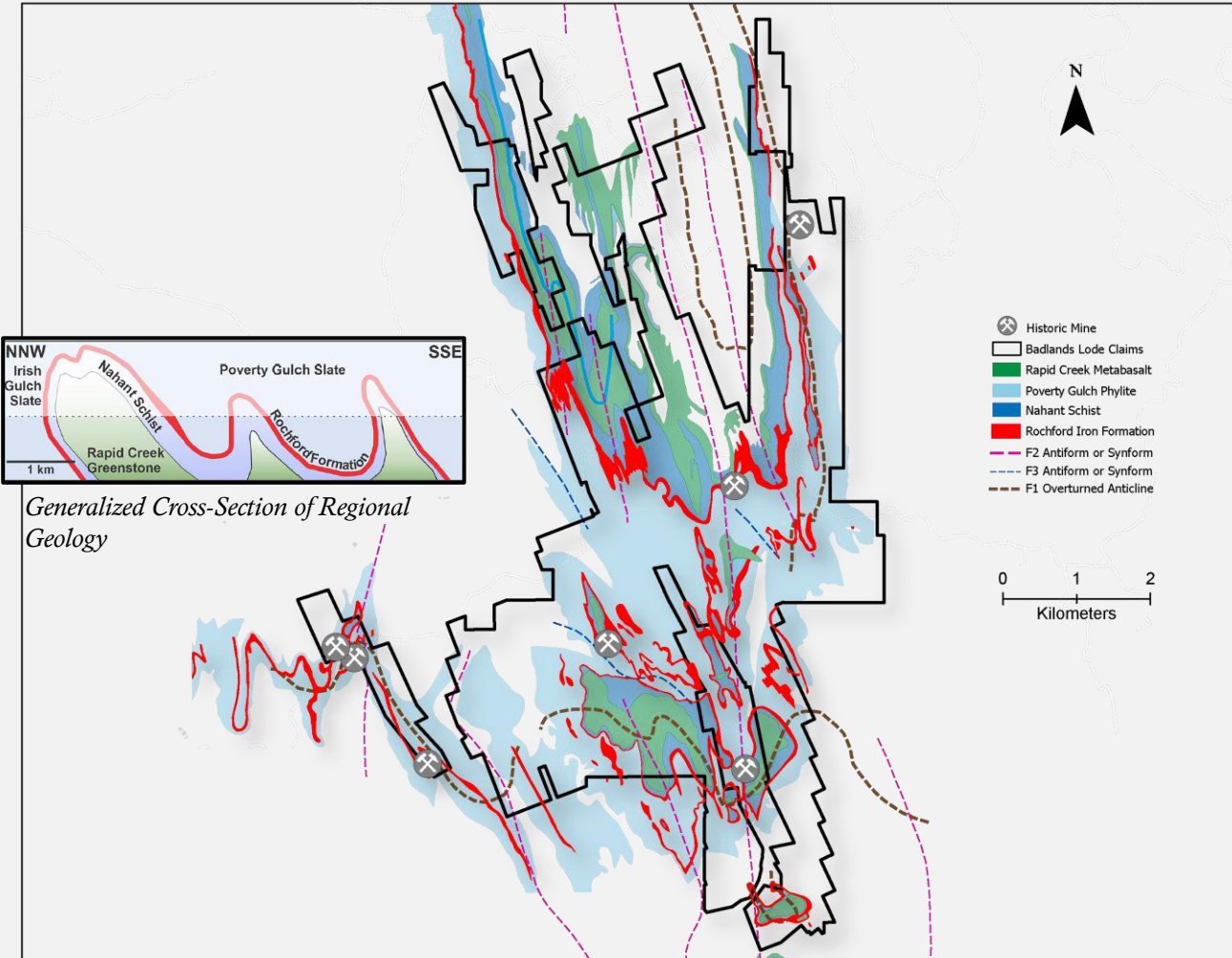
For more information
contact:
info@badlandsresources.com

TSX.V: **BLDS**
badlandsresources.com

Bella Project Geology

The geology of the Rochford District is remarkably similar to that at the Homestake mine with gold hosted in multiply deformed Proterozoic carbonate facies and local sulfide-facies iron formation that has typically been metamorphosed to cummingtonite / grunerite phyllites/schists and chlorite schists. There are numerous gold mines and prospects in the district with significant past production in the late 1800's and early 1900's.

Ledge-type gold targets are controlled by the intersection of steep deformation zones with iron formation in structurally thickened plunging F2 synclinal fold axis



Number of clear opportunities in Rochford District, in the proper geological setting (thickened synclinal iron formation fold structures, cut by sub-parallel deformation zone)

